



OPPOSITE: The custom flat-panel walnut vanity, wrapped with durable solid-surfacing in a waterfall effect, was designed with doors that look like drawers. “We wanted it to look more like a dresser than a cabinet,” designer Lesly Sallan says. Behind the mirror is a built-in medicine chest. **LEFT:** The roomy vessel sink works with contemporary wall-mount hardware in polished chrome.



For optimum task lighting for applying makeup or shaving, install sconce lighting about face height or slightly above.

suite escape

Sleek surfaces and soothing amenities give busy parents a relaxing master bath retreat.

WRITER AND FIELD EDITOR **KHRISTI S. ZIMMETH**
 PHOTOGRAPHER **BETH SINGER**





peace is elusive

with three boys and a girl under age 11, homeowner Erin Brockhaus says. Yet that's exactly what she and her husband, Rick, sought when they asked designer Lesly Sallan to help them renovate the master bath in their 1923 home in Birmingham, Michigan, a Detroit suburb.

"Erin wanted a space with clean lines and a contemporary sensibility," says Sallan, who drew inspiration for the couple's in-house escape from their favorite luxury hotels. The 12x8-foot bath had been converted from a small bedroom sometime in the 1980s and sported pink carpeting and laminate countertops. "It had a strange layout and no tub, just a shower," Erin says. Priorities included a large, soothing shower with a rain-style head, and a tub roomy enough for a private stress-relieving soak or for bathing a couple of kids at once.

Working within existing room dimensions kept costs in line, Sallan says. The shower and toilet stayed in the same place, but she shifted the rest of the floor plan, with a custom-made vanity replacing an awkward linen closet and a deep tub taking the place of the outdated vanity. Radiant heat in the floor keeps the marble tiles toasty for toes of all ages.

The homeowners had planned to put the house on the market before the renovation but have been won over by their revamped space. "I just love it," Erin says. "I wanted to feel like I was on vacation in my own bathroom every day, and I certainly do."

RESOURCES BEGIN ON PAGE 108.



budget

Cabinetry

| | |
|--------------------------|-------|
| Hardware | 170 |
| Vanity, medicine cabinet | 5,565 |

Plumbing

| | |
|-------------------------|-------|
| Faucet, sink | 1,465 |
| Shower valves, fixtures | 1,110 |
| Toilet | 575 |
| Tub, fixtures | 4,225 |

Surfaces

| | |
|---|-------|
| Glass shower enclosure | 1,800 |
| Marble for floor and shower, glass mosaic in niches | 4,735 |
| Paint | 300 |

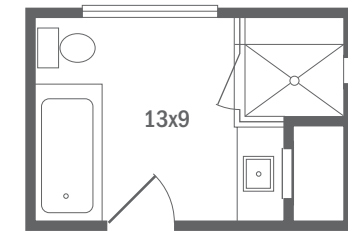
Miscellaneous

| | |
|------------------------|-------|
| Light fixtures | 500 |
| Mirror above tub | 500 |
| Radiant heating system | 1,000 |
| Window treatment | 275 |

Total **\$22,220**

Costs do not include labor unless noted.

about this makeover



Working within an existing footprint, designer Lesly Sallan kept the shower and toilet in their existing locations, but added a tub and moved the vanity.



OPPOSITE TOP: Glass from floor to ceiling encloses the marble-lined shower. **OPPOSITE BOTTOM:** The deep tub has a solid-surfacing deck and a built-in heater to help water stay warm. Sallan selected white solid-surfacing without graining to tie in to the marble tiles on the floor and in the shower without creating visual clutter. **ABOVE RIGHT:** A drum-style shade on the ceiling light adds a touch of glamour. **ABOVE, FAR RIGHT:** The square showerhead repeats the shape of the 12x12-inch marble tiles in the shower. **RIGHT:** Glass mosaic tile backs built-in niches in the shower. **FAR RIGHT:** Inset limestone tiles laid in a ruglike pattern add interest near the tub. Radiant heat warms the new marble-tile flooring.